

### National Monthly Performance

|   |  |  |
|---|--|--|
| Last month you registered 544kW of STCs         | That's a monthly decline in capacity of 19kW (3.%) |  |
| Last month you ranked #49 nationally            | That's a change of -11 ranks                       |  |
| Last month your national market share was 0.16% | That's a monthly decline in market share of 0.04%  |  |

#### State

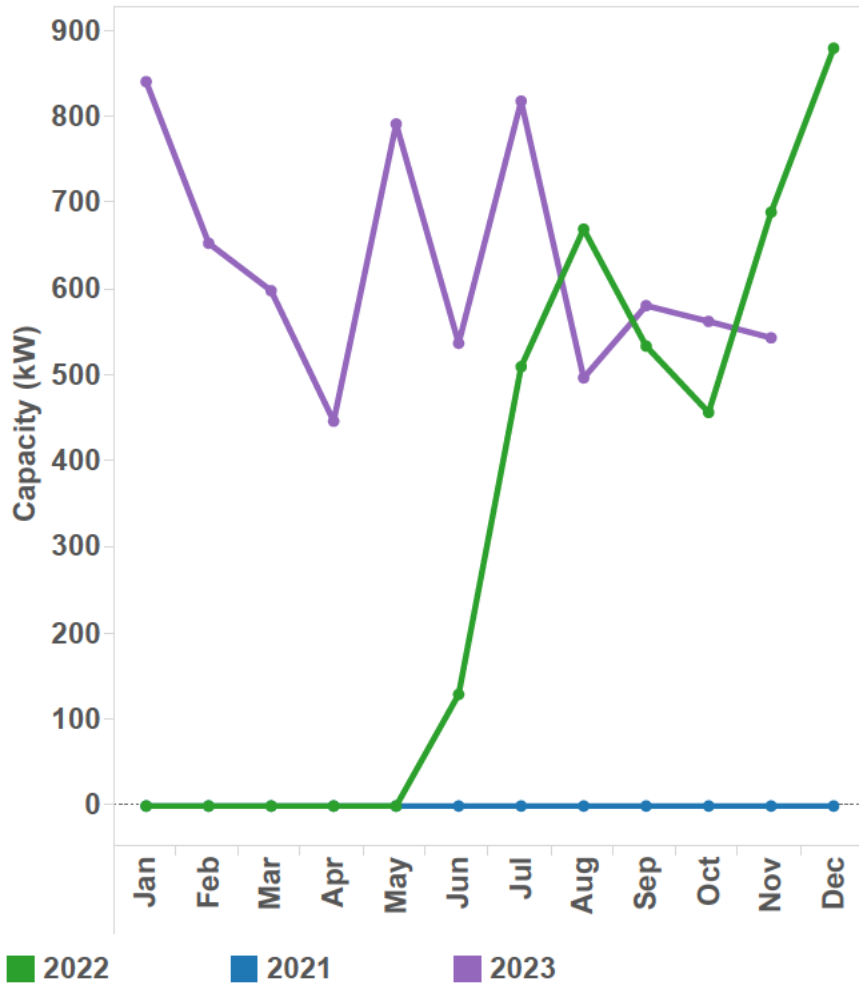
| State | Your Rank | Market Share(%) | kW  |
|-------|-----------|-----------------|-----|
| ACT   | 22        | 0.15%           | 10  |
| NSW   | 54        | 0.15%           | 165 |
| QLD   | 80        | 0.02%           | 20  |
| SA    | 44        | 0.02%           | 7   |
| VIC   | 25        | 0.50%           | 342 |

#### Segment Nationally

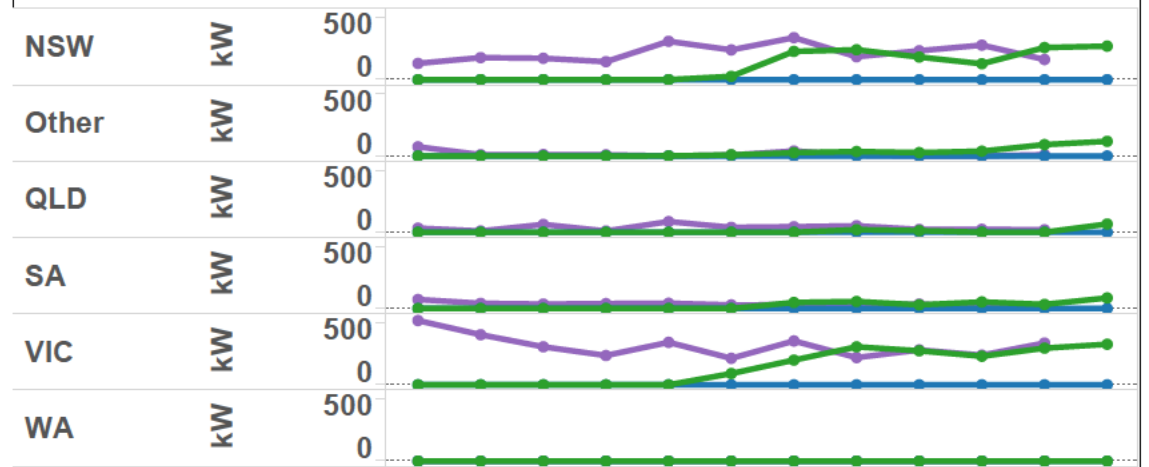
|        | Your Rank | Market Share (%) | kW  |
|--------|-----------|------------------|-----|
| <15    | 42        | 0.19%            | 492 |
| 15-<40 | 66        | 0.11%            | 52  |

# Trends in Registered kW (STC)

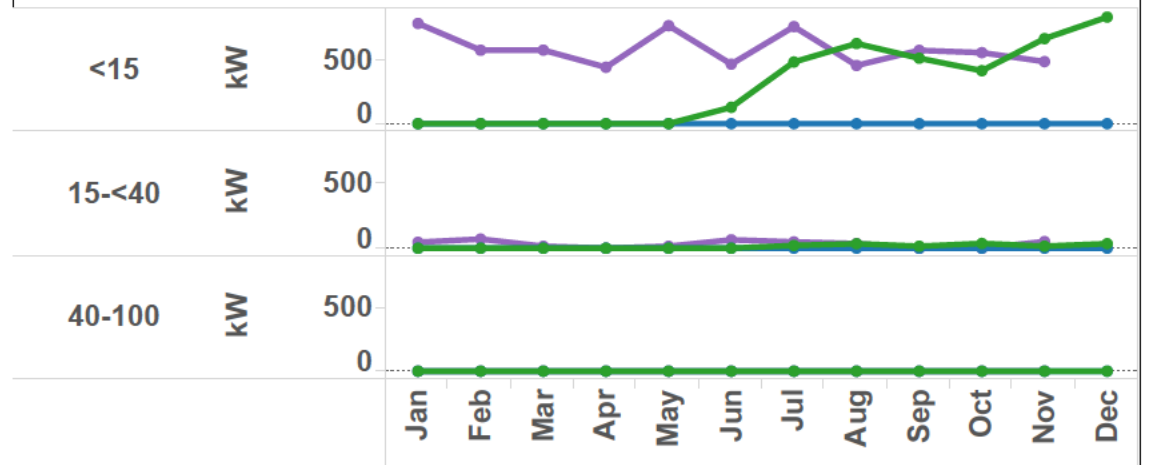
Your Volumes - National



Your Volumes - State

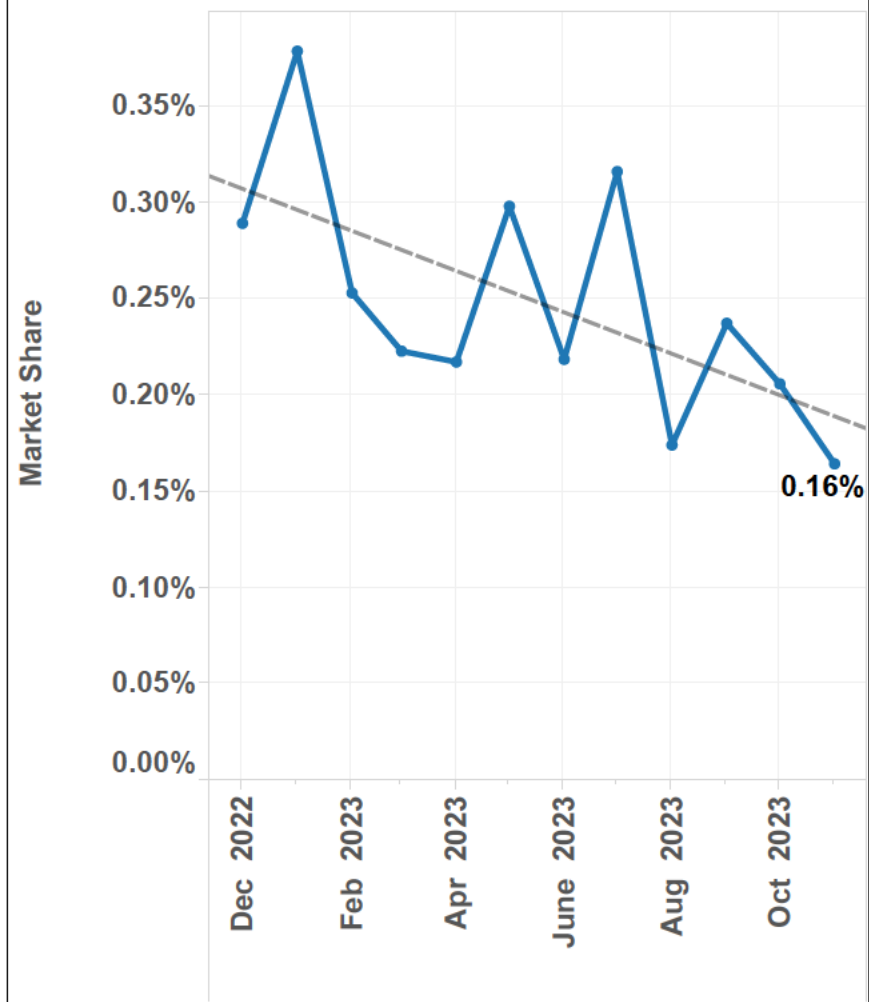


Your Volumes - Segment

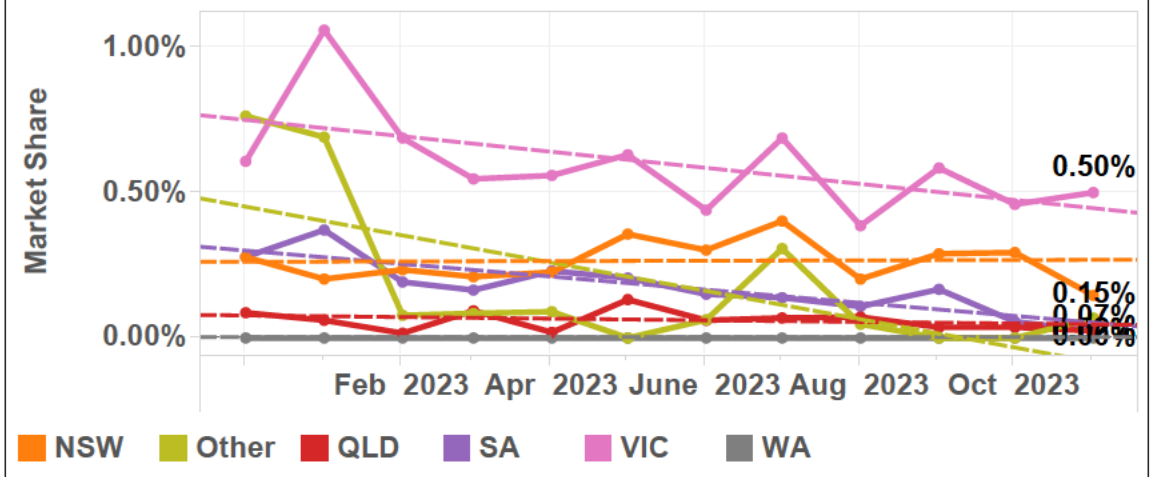


## Trends in Market Share (by kW, STC)

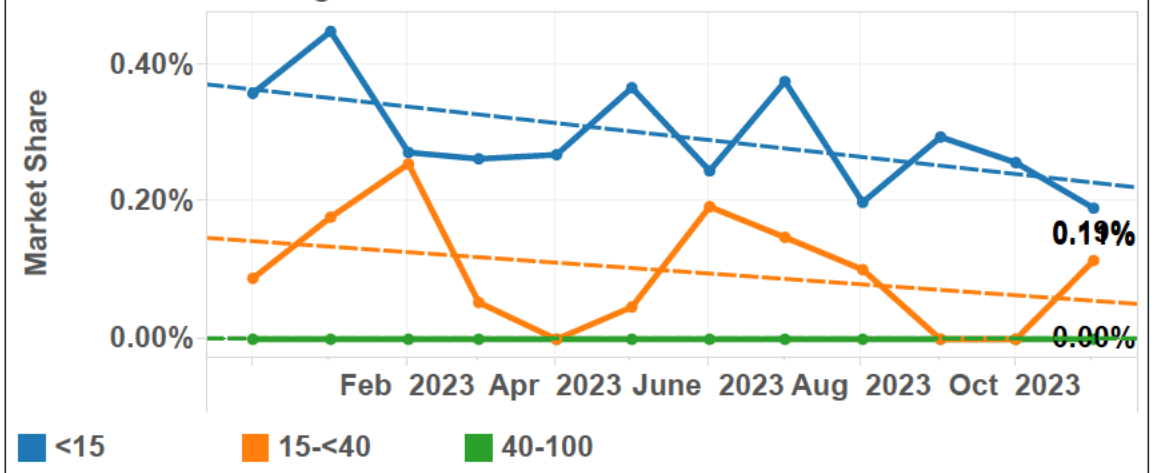
Your Market Share-National



Your Market Share-State

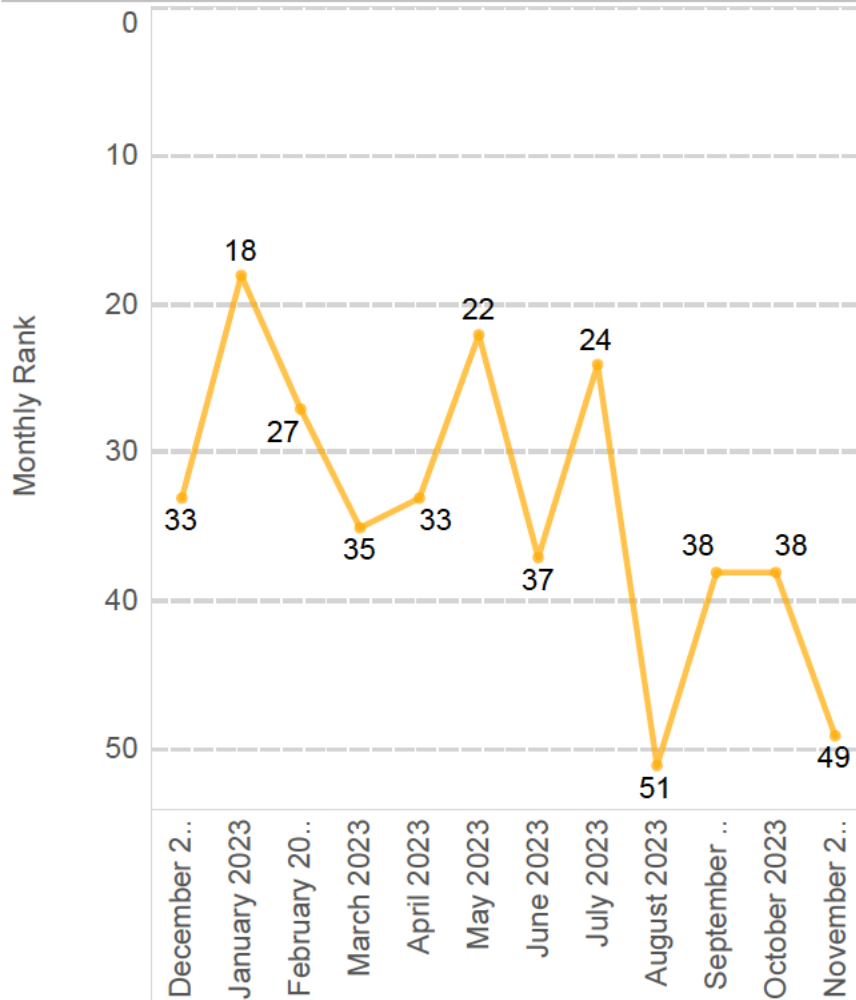


Your Market Share-Segment

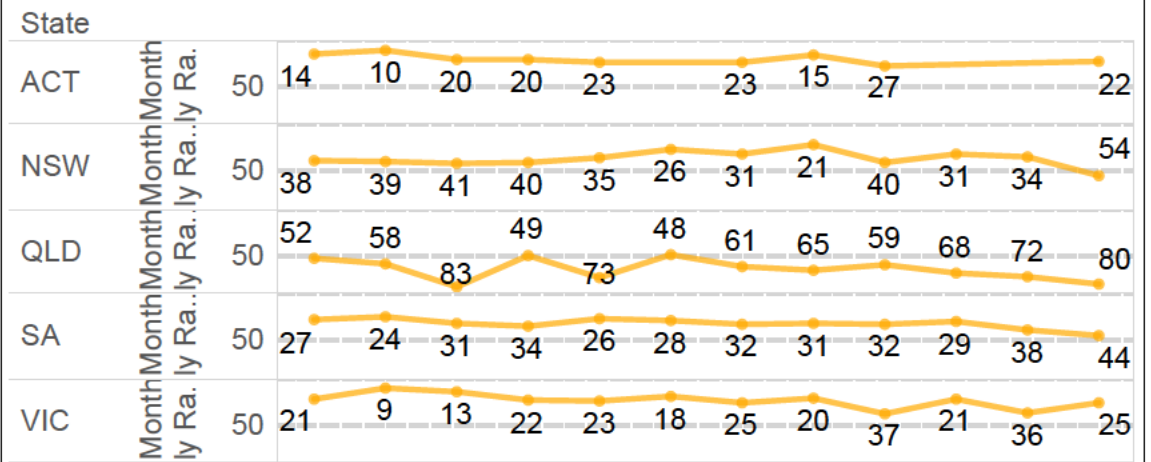


## Trends in Rank (by STC kW registered)

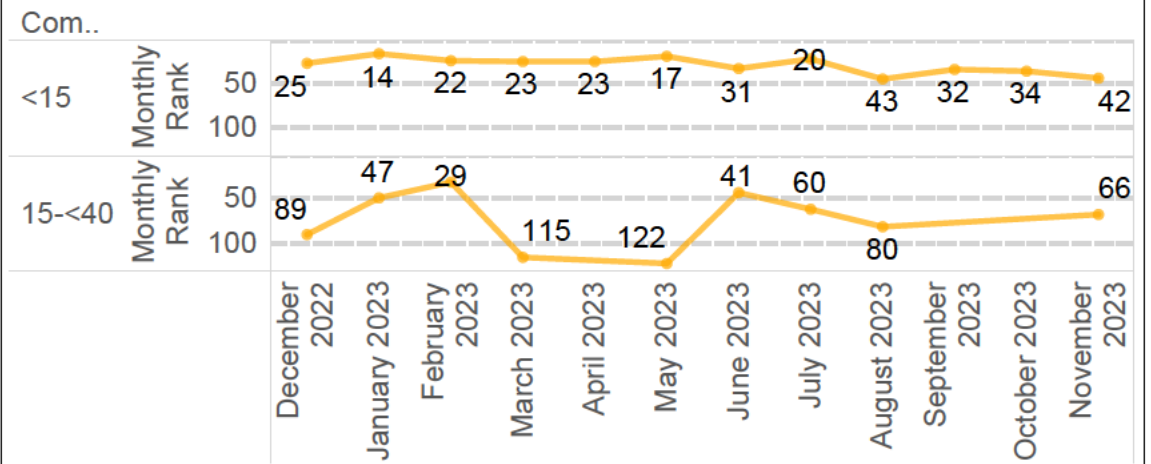
### Your Evolution of National Rank - Last 12 Months



### Your Evolution of State Rank - Last 12 Months



### Your Evolution of Segment Rank - Last 12 Months



**PTY LTD - State X Segment, Month of 1/11/2023**

1/11/2023

**Rank**

| Commer.. | ACT | NSW | QLD | SA | VIC |
|----------|-----|-----|-----|----|-----|
| <15      | 21  | 48  | 66  | 40 | 20  |
| 15-<40   |     | 54  |     |    | 41  |

**Market Share**

| Commer.. | ACT   | NSW   | QLD   | SA    | VIC   |
|----------|-------|-------|-------|-------|-------|
| <15      | 0.20% | 0.16% | 0.03% | 0.03% | 0.64% |
| 15-<40   |       | 0.14% |       |       | 0.27% |

**Capacity Registered**

| Commer.. | ACT | NSW | QLD | SA | VIC |
|----------|-----|-----|-----|----|-----|
| <15      | 10  | 144 | 20  | 7  | 311 |
| 15-<40   |     | 21  |     |    | 31  |